

# introduction

Welcome to the first WATTYL PAINTWORKS® Texture Solutions Specification Manual. Whilst this is actually the fourth manual detailing the products and systems within the Watty Granosite® range, this manual marks a significant improvement in the ease of use for specifiers of texture systems.

The use of texture coatings has increased over the years as developers, designers and builders have come to understand the valuable long term asset protection that specially formulated high build systems can provide over a standard paint specification. Particularly in aggressive environments such as coastal areas and major cities where salts, carbon dioxide and other pollutants combined with moisture and extreme UV exposure to actively work at breaking down substrates, the use of a high performance coating system is necessary to minimise maintenance and maintain asset value.

This manual contains everything you need to generate easy to read product specifications for the texture coating of buildings and associated structures. The GRANOSITE® range has a long and proud history of being utilised on everything from quality residential developments to prestigious commercial towers across Australasia and throughout South East Asia for more than 50 years. Watty and GRANOSITE® are the names you can trust for expert coating advice teamed with superior quality products that have a proven high performance track record.

Accurate and up to date information is vital to the successful specification and application of coating systems. We therefore request that you complete the enclosed registration form to ensure that you receive all updates to information on existing products as well as details of new products as they are released.

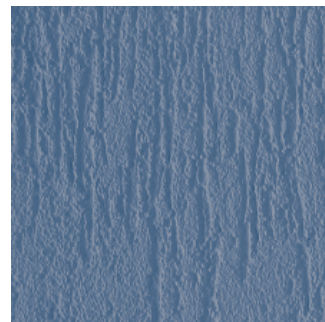
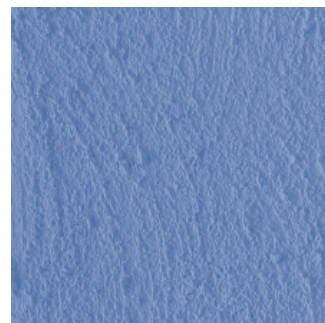
Watty not only provide the extensive range of coatings outlined in this manual, they also manufacture and market leading paint brands including SOLAGARD®, TAUBMANS™, ESTAPOL® and KILLRUST® as well as a comprehensive selection of industrial coatings. For complete details on the Watty coatings range, contact Watty for your copy of the WATTYL PAINTWORKS® Decorative Solutions Specification Manual or visit [www.watty.co.nz](http://www.watty.co.nz)

If you have any questions regarding technical information in this manual, please contact the Watty Technical Services Helpline on 0800 735 551 from anywhere within New Zealand.



# Contents of this manual

- How to use this manual
- New Website
- Professional Services outline
- The Wattyl GRANOSITE® range
- Frequently asked questions
- Conditions of Specification
- Indices for Specifications and Technical Data Sheets
- WATTYL PAINTWORKS® Specifications – Texture & Aggregate
- Wattyl Technical Data Sheets
- Preventative Maintenance Guide



# How to use WATTYL PAINTWORKS®

This manual has been developed to ensure that the professional specification of texture coating systems is as easy as possible. There are three important components that should be included in any specification and these can be found in this manual -

## 1. Coating Systems

This section contains complete coating system specifications that are designed to be copied and included in your project documentation. Each system has a unique Specification Number to allow for easy and accurate referencing. The easiest way to find the correct specification for your purpose is to go to the Indices tab and select the appropriate index format. For your convenience the coating system specifications have been listed in two ways –

**By substrate** – broken down into “Texture” specifications and “Aggregate” specifications, this index lists systems applicable to a wide range of common substrates. Under each substrate, the systems options are listed in alphabetical order.

**Numerical** – if you already know the number of the specification you require, go to this index for a list of all systems in numerical order.

## Specification Details

Each specification contains the following elements

**Specification Number**  
This is the unique identifier for each system

**Issue Date**  
If you are unsure that you have the most up to date version of the specification please contact Wattyl Technical Services on 0800 735 551 for confirmation.

**System**  
This is the name of the system and refers to the topcoat being specified. This panel will also indicate whether the system is APAS approved

**Substrate**  
This is the environment and substrate for which this specification was developed eg Exterior – new & uncoated off-form concrete

**Category**  
Indicates the level of quality of this system and the type of carrier eg water based

**Product Features**  
Provides a brief description of the systems features and benefits

**Surface Preparation**  
Indicates the minimum level of surface preparation for this coating system


**Application Details**  
This panel provides a detailed description of this system including the products comprising the system, the order in which they are applied, the touch dry and recoat times between coats, the film build, theoretical coverage rate and the relevant application equipment. The panel also provides a cross reference to the Technical Data Sheet for each product in the system should more specific detail be required.

**Recommended Uses**  
Gives an indication as to the types of environments where this system would be applicable.

**Additional Notes**  
Contains additional information relevant to this system before, during and after application.

**Caution**  
Please note all information provided regarding safety and drying conditions.

**Disclaimer**  
Please pay particular attention to the disclaimer at the bottom of each specification. If you have any questions please contact Wattyl Technical Services on 0800 735 551.


Page 1 of 1  
August 2004

### Paintworks Specification GS 100.1NZ

---

**System** GranoAntique® Trowel Satin

**Substrate** Exterior – Previously painted oil based / enamel exterior surfaces

**Category** Premium Texture – Water Based

**Product Features**  
GranoAntique® is a trowel applied pigmented acrylic texture coating giving an elegant yet rustic fine grainy textured finish.

**Surface Preparation**  
Remove all paint, which is soft, blistered, loose, or flaking back to a firm edge. Areas where the previous coatings were powdery, remove all powder. Wash all surfaces with mild detergent to remove contaminants, rinse with clean water. Remove all gloss on painted surfaces with 220 abrasive paper. Fill any cracks, holes or imperfections with GranoPatch® Smooth (G1.04NZ), allow to dry, sand and dust off.


Application Details	Data Sheet	Coverage	Film Thickness (microns)		Dry Times	
			Wet	Dry	Touch	Topcoat
First Coat: <b>Taubmans™ All Purpose Undercoat</b> <i>(equipment: brush, roller or spray)</i>	TA004	0.07 L/M <sup>2</sup>	75	39	4 hours	24 hours
Second Coat: <b>GranoAntique®</b> <i>(equipment: Stainless Steel &amp; Red Plastic Trowel)</i>	G2.11NZ	2.00 Kg/M <sup>2</sup>	1105	670	4 hours	24 hours
Third Coat: <b>GranoImpact®</b> <i>(equipment: roller or spray)</i>	G2.01NZ	0.25L/M <sup>2</sup>	250	120	4 hours	6 hours

**Recommended Uses** For exterior or interior use.  
For use on suitably prepared off-form concrete Class 2 (AS 1510) or equivalent, cement rendered fair-faced flush-jointed concrete block and brickwork (common, clay, concrete) CFC, tilt-up and pre-cast concrete. See the appropriate system specification sheet for further details.

**Additional Notes** Surface preparation is the responsibility of the Builder, Renovator or Main Contractor and the Applicator. To achieve the indicated performance, it must be carried out according to Wattyl's recommendations. It is recommended that application be carried out by a skilled applicator, who is totally conversant with the Wattyl Granosite products and systems, to validate full material warranty conditions.

**Caution** Provide adequate ventilation during use. Application **SHOULD NOT** be carried out if the air temperature or the substrate temperature is below 10°C or above 35°C. The temperature must not fall below 10°C during the drying process.

1. This information is provided with respect to the listed Wattyl products. Wattyl recommends that:  
(a) you review the Technical Data Sheets (TDS) and Material Safety Data Sheets (MSDS) before you use or handle the product; (b) the product be used only in accordance with the information provided by Wattyl; (c) the product be transported, stored and handled in accordance with the information on the MSDS and relevant TDS; and (d) you thoroughly test the product, using the recommended application method on a sample of intended substrate, before using the product.  
2. The information in this specification sheet was prepared using information gathered during product development. While Wattyl endeavours to update this information and maintain the accuracy and currency of its contents, Wattyl cannot guarantee that the information provided is wholly comprehensive.  
3. Wattyl recommends that you conduct such additional investigations as may be necessary to satisfy yourself of the accuracy, currency and comprehensiveness of the information on which you rely in using and handling the product. If you require further information please contact your nearest Wattyl Office.  
4. To the full extent permitted by law, Wattyl's liability for breach of a conditioner warranty implied into the contractor sale between Wattyl and you by law is limited to Wattyl's election to: (a) the replacement of the product; or (b) payment of the cost of replacing the product.


WATTYL (NZ) LTD INFORMATION HELPLINE Ph: 0800735551 NEW ZEALAND

Can't find the specification you require? Customised specifications can be discussed by contacting Wattyl's Project Services on 0800 735 551.





Visit the new Wattyl website for an unprecedented level of access to valuable tools and information on the entire range of Wattyl products. Whether you are specifying an interior feature wall, a texture for a concrete façade, a protective coating for structural steel, an anti-graffiti barrier, a timber stain and clear, a polyurethane for joinery or just about any application, the Wattyl website can provide expert advice and technical documentation.

The new website contains a specialised section for Specifiers of coating systems which allows you to enter market specific areas –

## Architectural

---

contains information on paint and texture products and systems

## Protective Coatings

---

contains information on the coating of structural steel, the provision of anti-graffiti barriers and industry specific advice for markets such as pipelines, tanks & bridges.

## Marine & Aquaculture

---

contains detailed information on coatings for water borne vessels such as anti-foulings and products for the commercial fishing industry.

## Industrial Timber & Metal

---

contains a wealth of information relating to coatings for timber floors, furniture & joinery as well as metal coatings for machinery and other light engineering applications.

Product Technical Data Sheets, System Specifications and Material Safety Data Sheets are all available on-line for easy access.

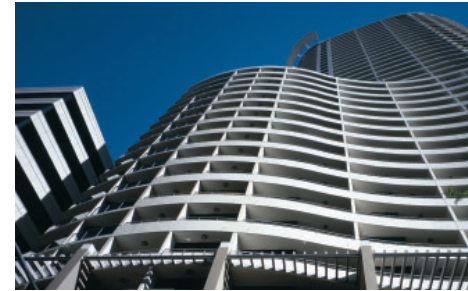
order all of your colour samples and specification tools online  
visit [wattyl.co.nz](http://wattyl.co.nz) **now** and experience the difference

# Wattyl Professional Services

Wattyl's commitment to servicing the design community is demonstrated through a number of market leading initiatives -

## Major Projects

Through its extensive product range and professional consultants, Wattyl is able to assist with all of your coatings requirements from structural steel to high performance texture coatings and superior interior paints. Wattyl's Project Services has been formed to provide design industry professionals with an exceptional experience when dealing with major construction projects. Services provided by Wattyl's Project Services include specification writing, technical advice and project specific sampling all of which is designed to make specification easy and provide a high level of confidence in the chosen coating system.



## Colour & Product Support

Wattyl has become renowned for its colour sampling service which has been proven as second to none. Within 48 hours, you can have large samples of any colour within the complete Wattyl range on your desk ready to be used in your client presentations. Complete the Sample Request Form or alternatively order on line at [www.wattyl.co.nz](http://www.wattyl.co.nz) for fast and professional service.

In addition to individual colour sampling, a range of other colour & product support tools are available to the professional designer including:

- Wattyl Fandeck – an easy to use deck containing all of the fantastic colours in the Wattyl standard colour system.
- Wattyl GRANOSITE® Texture Sampler Pack – an excellent fold out pack containing actual samples of 36 different GRANOSITE® finishes ranging from low profile membranes to stunning aggregate coating.



fandeck



texture sampler

swatches

wallchart

colour cards

\*Out of stock colours will take longer to supply.

# Material Safety Data Sheets

Wattyl is able to provide a complete Material Safety Data Sheet (MSDS) for all of its products through our Technical Services Department (Ph 0800 735 551) or through any Wattyl Trade Paint Centre.

# Website

[www.wattyl.co.nz](http://www.wattyl.co.nz) is now the pre-eminent website for all of your coatings needs. Through the "Specifiers" section of the site you are able to access all of our standard paint specifications, gain information on new products, order colour samples, receive technical updates and much, much more. This site has been designed to make the process of specifying product and colours as simple as possible and for the first time, you can access the entire Wattyl range from Protective Coatings to timber stains, interior ultra-premium acrylics and high performance exterior textures all in the one location.

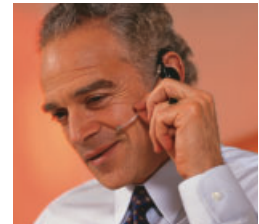


# Technical Services

Not sure which product to use? Unsure about surface preparation? Wattyl offers a technical advisory service to provide expert help on all coatings issues. Technical advice is available on

- Choice of the correct coating system
- Surface preparation
- Coating application

Don't take unnecessary chances when Wattyl can provide an informed solution, often over the phone. For all technical enquiries, call 0800 735 551 for your nearest Technical Services Department or email [projectservices@wattyl.co.nz](mailto:projectservices@wattyl.co.nz)



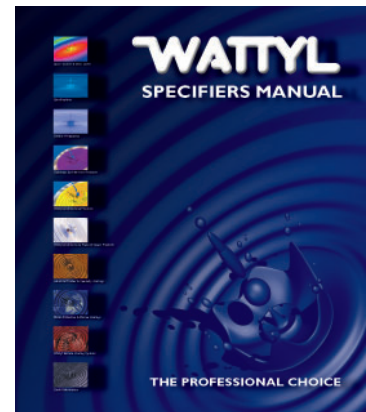
Wattyl laboratories hold National Association of Testing Authorities (NATA) Registration and Wattyl Australia Pty Ltd is accredited to ISO9001 and is recognised by the Australian Paint Approval Scheme (APAS) as an approved supplier of paint coatings.

# News & information

Wattyl is committed to keeping professional specifiers up to date on industry and product news and information. The Wattyl website [www.wattyl.co.nz](http://www.wattyl.co.nz) also contains up to date news and information relevant to design professionals including technical bulletins, new systems and technical data sheets.

# Manual Updates

Up to date & accurate information is essential to ensure the successful specification of systems and application of products. When available, updates to the information contained in this manual will be available by contacting your nearest Wattyl office on 0800 735 551 or can be downloaded at [www.wattyl.co.nz](http://www.wattyl.co.nz)



# The Watty! GRANOSITE<sup>®</sup> Range

Since 1952, developers, architects and builders who are seeking quality products that not only provide appeal, but also long-life substrate protection, have specified the GRANOSITE<sup>®</sup> range of products. Today, GRANOSITE<sup>®</sup> is synonymous with texture coatings and Watty! manufacture approximately 35 products that form the basis of over 450 system specifications applicable to a wide range of substrates that are commonly used in modern building practise. Furthermore we are constantly assessing new substrates as they emerge and designing appropriate coating systems.

The range includes surface preparation products, a comprehensive selection of textures, high quality aggregate finishes and market leading membranes that ensure that GRANOSITE<sup>®</sup> remains the best choice for long term asset enhancement and protection.

## Surface Preparation

### Patching Compounds

GranoPatch<sup>®</sup> Smooth – a versatile and reliable smooth patching compound used to make good surface defects up to 4mm to produce a standard of finish to allow a quality job of texture application or painting. Used to repair concrete and most masonry surfaces with the addition of 15% general purpose builders cement.

### Renderers & Plasters

Grano Modified Render<sup>®</sup> – a high quality, pre-blended, cementitious rendering and screeding material used to provide a wood float or sponge finish at thicknesses in the range of 10-12mm in one application. Hard dry in 7 days with no fine sand residue and no need to sand before coating.

GranoReady Render<sup>®</sup> – a high quality, ready to use polymer render allowing quick and easy thin section (1-2mm) rendering particularly over substrates such as fibre cement sheeting and polystyrene when applying low profile textures.

Grano Adhesive Mortar<sup>®</sup> - a high quality, pre-blended, polymer modified, cementitious rendering and screeding material used to provide a wood float or sponge finish at thicknesses in the range of 4-5mm in one application. Grano Adhesive Mortar has superior application and adhesion properties and virtually eliminates issues of hair line cracking. Hard dry in 7 days with no fine sand residue and no need to sand before coating.

## Primers

GranoPrime<sup>®</sup> – used under most texture systems to ensure optimum performance of the complete coating system by stabilising irregularities in substrate absorption and mechanical strength.

GranoPrime<sup>®</sup> S – solvent based primer used for high density substrates such as tilt slab and off form concrete to ensure maximum adhesion.

GranoBasecoat<sup>®</sup> – a pure acrylic, low sheen finish used to provide uniform base colour under products such as GranoGranit<sup>®</sup>.



## Texture & Aggregate Range

For samples of these textures, please see the Watty! GRANOSITE® Texture Solutions Sampler Pack

# Basecoat is rolled and aggregate is sprayed

\* Can be spray applied particularly when used as a topcoat

	Roll	Spray	Trowel	Mitt	Brush
<b>Texture Coatings</b>					
GranoAntique®			•		
GranoClassic®		•			
GranoDécor®		•			
GranoHeritage®	•				•
GranoImpact®*	•				
GranoModena Sand™			•		
GranoNouveau®			•		
GranoPearl®	•				
GranoSahara®	•			•	•
GranoSkin Membrane®*	•				
GranoSorrento™				•	•
GranoTex Roll On®	•				
GranoTex 2mm®		•			
GranoTrowl® 1.5mm/2mm/3mm			•		
<b>Aggregate Coatings</b>					
GranoElegance®		•			
GranoGlitter®			•		
GranoGranit®			•		
GranoStone® 1mm/2mm/3.5mm#		•			

## Topcoats

Topcoating a texture system enhances durability, provides additional protection from the elements and allows for easy maintenance of the coating system. Watty! offers two superior products as topcoating options within the Granosite® range

**GranoImpact®** – Unmatched in the market, GranoImpact® is a pure acrylic, high performance elastomeric coating that performs time and time again. Well proven in the harsh New Zealand environment, GranoImpact® is featured on everything from exclusive coastal resorts to the most prestigious high rise developments as either a texture in its own right or as a topcoat for other systems. Its promise of superior protection, ability to be easily applied in a variety of attractive styles and capacity to be supplied in an extensive range of colours are just some of the reasons that GranoImpact® has so often been the product of choice for developers, designers, builders and applicators alike.

**GranoSkin® Membrane** – With an incredible ability to elongate to over 750% of its film thickness, GranoSkin® Membrane is truly a high performance elastomeric coating. In addition, the coating has weatherproofing characteristics that make it the best solution in areas where moisture control is vital for protecting substrate integrity. As with GranoImpact®, GranoSkin® Membrane can be used as a stand alone texture, can be tinted to a wide range of colours and can be applied in a variety of styles.

GranoSkin® Membrane is the only recommended topcoat for systems applied over fibre cement sheet (excluding expressed jointed systems), AAC blocks and panels and extruded polystyrene.

## Concrete Protection

Taywood Engineering Ltd, a well recognised authority in the testing of coatings suitable for the retarding and prevention of reinforcement corrosion, state *“One of the main causes of concrete reinforcement corrosion is by a neutralization process called carbonation, whereby atmospheric carbon dioxide penetrates the concrete, reacting with the calcium hydroxide present. This carbonation front becomes a major problem when the zone of neutralized concrete (pH8.5) reaches the depth of the embedded reinforcement.*

*The steel may start to corrode when the thin oxide layer around it, formed by the high alkalinity of the concrete (pH12.5), is no longer stable because of increased acidity.*

*Thus the performance of ‘anti-carbonation’ coatings in terms of their effectiveness at preventing the ingress of carbon dioxide and halting the progress of carbonation, is a vitally important factor in today’s strategy for providing long-term protection and increased lifetime for reinforced concrete structures”.*

As tested by Taywood, both GranoImpact® and GranoSkin® Membrane provide excellent protection against carbonation at levels up to 6 times the required minimum standard. Both of these products can therefore dramatically prolong the life expectancy of a reinforced concrete substrate and provide significant long term savings.

## Additional Items

**GranoBond®** – a pure acrylic, water based admixture for cement mixes, concrete and hard wall plaster. GranoBond® improves flexibility, adhesion, and tensile strength.

**GranoSeal®** - a pure acrylic, water based sealer used to control excessive suction on absorbent substrates such as AAC blocks and panels. GranoSeal® provides a strong adhesive key for subsequent Granosite systems.

**GranoGlue®** - a pre-mixed, thin bed acrylic adhesive for AAC blocks

**GranoFlex®** - a high performance acrylic jointing compound which when used in conjunction with GranoMesh®, allows quick and easy filling of fibre cement joints in one application with very little shrinkage on curing.

**GranoTilt Clean™** - high performance washing agent applied directly to tilt-up concrete panels to effectively remove bond breakers and other contaminants ensuring adhesion of subsequent Granosite® systems.

AS/NZS 2311:2000

# Guide to the painting of buildings

Standards Australia and Standards New Zealand publish a joint standard as a guide to the design, application and maintenance of decorative paint systems. This standard (AS/NZS 2311:2000) can be used as a guide in the production of paint specifications to suit individual projects.

Within Section 4 of AS/NZS2311:2000, the committee defines a range of generic paint types that are then used in Section 5 - Systems for the Painting of Buildings. All membrane or texture coatings are classified as Type B38 paints and are listed in Section 5 as alternatives to conventional exterior latex paint systems.

Wattyl Granosite® coatings are therefore suitable for specifications generated in accordance with AS2311:2000 when the system allows for a Type B38 coating.

For further information please contact Wattyl Technical Services on 0800 735 551.

## Australian Paint Approval Scheme

Formerly known as the Government Paint Committee (GPC) Scheme the Australian Paint Approval Scheme (APAS) is a government administered system with the aim of certifying the quality of paints.

The Scheme was developed for use by government departments from local to Commonwealth to provide a list of approved products and systems that comply with a rigorous set of performance requirements.

Several Wattyl Granosite® systems have been submitted and approved as meeting the APAS requirements and these are listed below. Please note that this list is accurate at the time of printing, for confirmation of systems approval please contact Wattyl Technical Services on 0800 735 551.

APAS Specification	Description	System
0117/3	Medium build latex long life low profile texture coating for exterior concrete & masonry	GranoPrime® S / GranoImpact® White
0117/4	High build latex long life high profile coating for exterior concrete & masonry	GranoPrime® / GranoTex® Roll-On White or GranoPrime® S / GranoTex® Roll-On White
0118/2	Low-moderate build latex low profile coating for interior concrete & masonry	GranoPrime® / GranoImpact® White or GranoPrime® S / GranoTex® Roll-On White

